

JONATHAN EDWARDS COLLEGE



FIRST YEAR HANDBOOK

2025

TABLE OF CONTENTS

3	Welcome Letter
4	JE: A History
5	Yale Traditions
6	JE Traditions
8	Yale Slang / Lingo
10	Acronyms
12	What to Pack
13	Accepting / Mailing Packages
14	2025-2026 FroCos
19	JE People to Know



Dear JE Class of 2029,

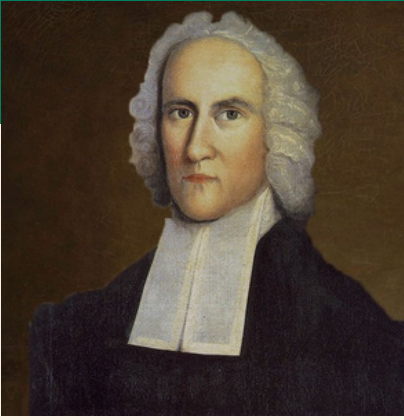
If you were to ask the Admissions Office why Jonathan Edwards College is best of all fourteen residential colleges of Yale, they would likely recite: "No college is better than any other college. Colleges are randomly assorted communities. No one college is better, they're just different." But we in JE know the truth. Soon, you too will know that JE is simply the best college!

Of course, the other colleges will attempt to make this same claim by mentioning something about their lipstick statues or their garden gnomes. However, when Yalies speak of JE events—like our Monster Ball and Spider Ball or Culture Draw or epic Food Nights, expect to detect a quiver in their voice and a wistful look in their eyes.

But, rather than sell you on JE's advantages now, we'd much rather you discover, celebrate, and sustain our great legacy. It's a well-known fact that colleges and their accolades live and die on the strength and pride of their first-year class. Is this too much to expect?! Perhaps elsewhere, but we have faith that you are up for this task—look at what you've accomplished thus far! With that, we are excited about your arrival and will be there waiting for you with open arms—ready to give hugs, take your questions...and your bags!

You are now members of the JE community—welcome home Spiders!

JE: A HISTORY



Jonathan Edwards (1703-1758) was an American preacher and theologian, known for starting The Great Awakening religious movement. He was Yale's first child prodigy, graduating at age 17.

Our Mascot

We are JE Spiders and proud of it! Our mascot derives from Jonathan Edward's most famous sermon, "Sinners in the Hands of an Angry God." He wrote: "The God that holds you over the pit of hell, much as one holds a spider, or some loathsome insect over the fire, abhors you, and is dreadfully provoked..." Inspiring right?

Our Motto

JE SUX! It may sound self deprecating, but it has a long and colorful history dating back to the 1970s. It all began when a JE students devised a plan to win at a former Yale tradition: Bladderball (where students push a large water-filled ball from Old Campus to their own college gates). One year, Spiders accidentally burst the ball. Angry participants began shouting, "JE sucks!" a chant that became popular at Yale football games. Subsequently, we held the record for the longest undefeated streak for Yale intramural sports and kept on winning—all to the chant of "JE Sux!" Thus it became a rallying cry for JE as a whole.



YALE TRADITIONS

YSO Halloween Concert

At midnight on Halloween, the YSO (Yale Symphony Orchestra) reveals a Yale-themed film planned entirely by YSO members, with live orchestral music to accompany! Tickets sell out quickly.

The Game

Harvard vs Yale. The third most-played rivalry in college football, ever since 1875. Last Saturday before Thanksgiving break. Each school alternates hosting the game every year (but it's better at Yale, duh!). Boola boola!

Holiday Dinner

AKA "Parade of Comestibles". Last day of fall classes. A lavish feast at Commons prepared by Yale Hospitality.

First-Year Snowball Fight

At the first snow of the school year, first-years will have a snowball fight on Old Campus at midnight. Bring your gloves!

Screw Ball

AKA First-Year Formal. Set up your suitemates.

Spring Fling

The last weekend of classes in April, right before Reading Week/finals. Hosted on Old Campus, Spring Fling features the Yale student band that won Battle of the Bands the previous weekend, and 3 famous musicians. Basically a whole day of partying and fun!

JE TRADITIONS

Gear Sale

JE famously has wonderful gear: hats, bathrobes, Nalgene, Crocs, gloves, ties, scarves, PJs, T-shirts, sweatshirts, gloves, headbands, rugby shirts, bathrobes, flip flops, socks, windbreakers, umbrellas—you name it... we've got it all, and it's all JE. Gear sales happen once a semester, including an item of first-year merch (to be designed by your class!)

Culture Draw

As the classiest college, our Head of College sponsors a draw each semester to give away tickets to fun events like a New York opera, ballet, Broadway shows, etc. Each Culture Draw event comes includes a fancy meal with a JE Fellow at one of New York's finest restaurants, so don't miss the chance to win a trip!

Tulip Princess

Every year at the Spring Picnic, one rising senior is democratically elected to be JE's "Tulip Princess". Duties include welcoming the tulips into bloom, getting a merch item with their face on it, and overall good vibes. Open to all genders.

Spider Ball

The swankiest party on campus. Exclusive to Spiders and their guests only. Featuring a live jazz swing band comprised of Yale Faculty.

Old Campus Lights

Every holiday/Christmas season, JE first-years will coordinate with suites on Old Campus to decorate your building with lights to spell out "JE LUX", a play on our motto "JE Sux" and Yale's motto "Lux et Veritas".

Winter Trip

Usually mid-February. Skiing, snowboarding, snowtubing, and the like.

Study Breaks

During Reading Week, the Dean and Head of College will sponsor late-night snacks to fuel your studies.

Wednesday Food Nights

The JECC (JE College Council) hosts monthly food nights on Wednesday, allowing you to sample a variety of New Haven restaurants!

Spider Cider & Tea for Tuesdays

Simple enough. Fall semester: Insomnia cookies and apple cider. Spring semester: Insomnia cookies and tea. Every Tuesday, 9PM in the Common Room. Also run by JECC.

Wet Monday

First-Years attempt to invade JE proper armed with anything water at midnight on the Monday after Easter. Upperclassmen defend the castle. Everyone gets wet and so everyone wins!





WHAT ON EARTH DOES THAT MEAN??

Yale is full of slang, lingo, and acronyms. You might spend your first few weeks on Google Maps or asking "What is an L-Dub?". Well fear not, study this guide carefully and you might even be mistaken for a sophomore. Ask for help if you're overwhelmed!

LINGO

Annex = where upperclassmen are sent to live on-campus if there is no room in their residential colleges.

Bluebooking = researching and choosing which courses you want to take. Historically done with a "blue book", but now online.

(The) Buttery = AKA "The Butt". Student-run cafes in resco basements with cheap food, open late nights from Sunday to Thursday.

Commons = Schwarzmann Center

Coursetable = a handy, Yalies-created website for course selection

CPA = Creative and Performing Arts grants are awarded by your college every semester for theatre, arts, publications, and music shows.

Fizz = Yale social app that allows you to anonymously post info/poll/ask questions, similar to Reddit

FroCos = First-Year Counselors

GHeav = Good Nature Market (formerly Gourmet Heaven), open 24/7 on Broadway St

Reading Week = the week after classes and before finals, giving you time to study

Rush = when students audition for acapella groups or sororities/fraternities during the first few weeks of the semester

Science Hill = STEM labs, buildings, and classrooms up Prospect St

Shopping Period = a 2-week period at the beginning of each semester allowing you to attend any classes that interest you, before officially submit your formal schedule

Snackpass = a popular food-ordering app that offers discounts & friend points

Tap Night = a night of festivities/celebration when students are selected to join extracurricular groups

Teas = hosted by your Head of College, where famous figures are invited to speak, with Q&A and (of course) tea and snacks

The Game = Harvard vs Yale

The Green = the New Haven Green

Transfers = to eat in a dining hall that's not your own residential college

Yuttle = Yale Shuttle



FUN WITH ACRONYMS

AACC, MENACC, AfAm, La Casa, NACC = Yale's Cultural Houses (Asian American; Middle East and North Africa; African American; Latinx; Native American)

CCAM = Center for Collaborative Arts & Media

CEID = (pronounced "seed") Center for Engineering and Innovation Design

DS = Directed Studies

EEB, EPE, MCDB, MBB, ERM, S&DS = many of Yale's majors are abbreviated (Ecology and Environmental Biology; Ethics, Politics, and Economics; Molecular, Cellular, and Developmental Biology; Molecular Biophysics and Biochemistry; Ethnicity, Race, and Migration; Statistics and Data Science;

FCC, YCC, JECC = First-Year, Yale, and JE College Councils

HQ = Humanities Quadrangle

HOC = Head of College

IMs = Intramurals (no-tryout sports teams in each residential college)

JE = Jonathan Edwards (we hope you got that)

LC = Linsly-Chittenden Hall

L-Dub = Lanman-Wright Hall (on Old Campus)

OC = Old Campus

OML = Osborn Memorial Laboratories

P-set = problem set (for math/econ/STEM classes)

PWG = Payne Whitney Gym

SSS = Sheffield-Sterling-Strathcona Hall

TD = Timothy Dwight (residential college)

WLH = William L. Harkness Hall (not to be confused with Branford's Harkness tower!)

XC = Cross Campus (patch of green in front of Sterling)

YDN = Yale Daily News

YSO = Yale Symphony Orchestra

YUAG = (pronounced "YOU-agg") Yale University Art Gallery

WHAT TO PACK

For the Suite

- TV
- Fridge
- Microwave

*** You should coordinate move-in with your suitemates! You only need one of these per common room.*

*** Common rooms are furnished with couches and tables, but you might want to bring posters/a rug to make it feel homey.*

For You

- Fan (Old Campus has no AC; it gets very hot the first 2 weeks of school, but cools down after that)
- Shower Shoes
- Shower Caddy
- Formal Attire (Yale has tons of formal events throughout both semesters!)
- Full-Body Mirror
- Hangers
- Extension Cord
- Desk Lamp (Bingham has overhead lighting but it's not the brightest for studying)
- Winter Clothes (New Haven winter is kind of brutal... especially if you're from the South)

*** Dorm rooms come with a bed frame, Twin XL mattress, desk, closet, and dressers. However, rooms can be small so try not to bring tons of extra furniture.*

MAILING PACKAGES

Packages should be mailed to the Yale Student Receiving Center, which is in the basement of Barnes and Noble. Your packages can be addressed as follows:

Your Name

Barnes & Noble Student Package Center
Bingham Hall
77 Broadway - Lower Level
New Haven, CT 06510-1714

*** Do NOT ship ballots or paper mail to Barnes and Noble! They ONLY accept PACKAGES. Your paper mail will be returned to the sender.*



Alternatively, if you would like your own PO Box, you can sign up for one at [Yale Station](#).

MEET YOUR FROCOS!

FroCos (First-Year Counselors) are senior undergraduate students from your residential college, who live with you on Old Campus. Every first-year is assigned to a FroCo group, which offers community, guidance, and advice. We (the FroCos) are here to support you as you begin the transition to calling Yale "home"!



Britney Gramajo Barrios (Head FroCo)

Britney (she/her) is from Westchester, New York, just a train ride away from NYC. She is majoring in Ethics, Politics, & Economics and Latin American Studies, and is pursuing a Human Rights Certificate. Outside of class, Britney has worked as a JE Aide (the best job on campus!) for three years.

She is involved with pre-law and mentorship groups including the Yale Undergraduate Legal Aid Association (YULAA) where she volunteers as a translator, the Yale Undergraduate Hispanic Pre-Law Association (YUHPLA) where she served as the Social Media Manager, and the Office of Educational Opportunity where she works as an FGLI Thrive Mentor. In her free time, she enjoys going on scenic walks, listening to new music, and going for a sweet treat with friends! She can't wait to meet the newest spiders of the Class of 2029 and welcome them to JE and Yale!



Hang Chen

Hang (he/him) is a Mechanical Engineering major from Brooklyn, New York, also pursuing an Energy Studies Certificate. He has spent much of his time at Yale mentoring and supporting others through his leadership with the Yale QuestBridge chapter, his role as a mentor for the Office of Educational Opportunity, and as a Camp Yale Harvest leader.

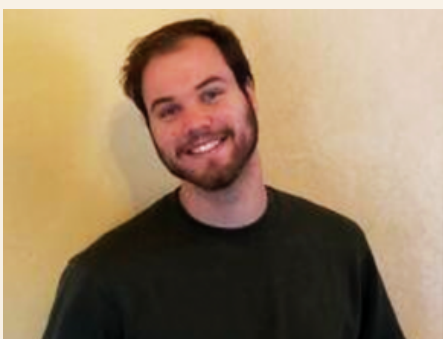
With interest in sustainability and the built environment, he conducts research on renewable fuels in the Pfefferle Lab and interns with MEP engineering consulting firms. Just recently, Hang studied abroad in Sydney, Australia to tie together his interests in energy systems, computational modeling, and building design. During Hang's free time, you can find him in the dance practice rooms, hosting cooking nights in the JE kitchen, going on snack breaks and walks with friends, and grabbing a matcha drink. Hang is excited to be back on campus, and most importantly, to meet and welcome the Class of 2029!



Zoey Duan

Zoey (she/her) grew up in Honolulu, Hawai'i and now lives in La Canada Flintridge, California. She is a Global Affairs major with certificates in Global Health Studies and Statistics & Data Science. At Yale, Zoey has served in a variety of capacities -- from committee chair to Director-General of Operations -- for Yale Model United Nations (YMUN) conferences in Taiwan, Korea, and India.

Outside of YMUN, she conducts medical research with Johns Hopkins Medicine, climate policy research with a non-profit think tank, and quality improvement as department director for Yale's student-run primary health clinic, HAVEN Free Clinic. Zoey has also dabbled in international journalism for The Yale Globalist, wet lab research for the Yale Child Study Center, dancing for Yale Danceworks, and even sparring with the Yale Mixed Martial Arts Club. In her free time, she loves listening to pop punk and true crime podcasts, pretending to study at cafes, and playing games (Monopoly Deal!) with friends. She is so excited to get to know all each and every frosh this fall!



Tomas Fuchs-Lynch

Tomás (he/him) is a Linguistics major from Santa Monica, California, pursuing an Italian Language certificate. Besides languages, he also loves theater. On campus, he directs and produces plays and is the president of the Yale Drama Coalition.

Tomás works in the Pama-Nyungan Historical Linguistics Lab researching Aboriginal Australian languages. He's also one of the Hard Core Heads for First-Year Outdoor Orientation Trips (FOOT). When he's not thinking too hard about words or in rehearsal, you can find him playing board games with friends, hiking, or frequenting one of New Haven's many coffee shops. Tomás is thrilled to be a FroCo and is excited to get to know the class of 2029. Go Spiders!



Alejandra Mendez

Alejandra (she/her/ella) is a senior majoring in Cognitive Science with a certificate in French Language Studies from New Bedford, MA. She is beyond excited to be a JE FroCo for the Class of 2029! She's had the privilege of working as JE Office Aide and a JE dining hall student manager, which has truly fed her love for the JE community.

She has also worked at the Afro American Cultural Center ("the House") as a peer liaison for first-year students. On campus, she has led and been involved in several student organizations, including the a cappella group Shades of Yale, the Latin dance group Sabrosura, the Dominican Students Association, and Yale Undergraduate Prison Project. Feel free to ask her about magical realism novels, Pinterest boards, k-dramas, study spots, and music recommendations. Welcome to Yale!



Semona Robel

Semona (she/her) is a senior from Minneapolis, Minnesota majoring in Ethnicity, Race, and Migration. In her time at Yale she has done everything from serving as Co-President and a mentor in the Urban Improvement Corps, teaching New Haven middle schoolers as a Yale-Classroom Assistant, and dancing on Yale's first and only Ethiopian-Eritrean dance team, Desta.

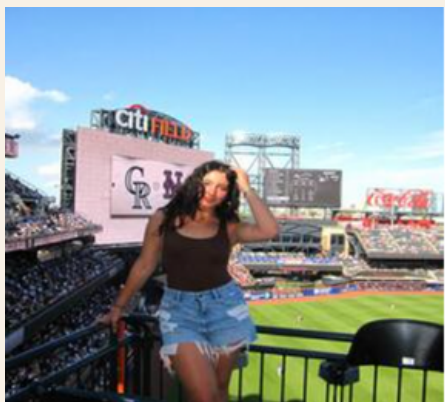
Semona is also a proud Spring 2024 Initiate of the Prestigious Pi Alpha Chapter of Delta Sigma Theta Sorority, Incorporated. In her free time, she enjoys going on walks, spending time with loved ones, and exploring New Haven. She is so proud to be a FroCo and is so excited to serve as a mentor to the JE Class of 2029, JE SUX!



Clarissa Tan

Clarissa grew up between Anshan, China and Lincoln, Nebraska. She is double-majoring in Global Affairs and Art/Design, with a French Language Certificate. Clarissa was Under-Secretary-General of Branding and Director for YMUN Taiwan, Korea, China, and Brazil.

She writes a travel column in the Yale Daily News, advises students on summer funding for the Fellowships Office, and works as a campus photographer. In her free time, Clarissa enjoys being a part of Danceworks, hiking to East Rock, taking digis of her beautiful friends, and backpacking (she has been to 71 countries!). She likes seals, dolphins, the city of Paris, and playing Wordle/Quordle/Octordle (try it).



Daliya Ali El Abani

Daliya (she/her) spent her teen years hiking the Blue Ridge Mountains and swimming in the Shenandoah River with her german shepherd, Zeus, in Winchester, Virginia. Until the age of 12, she grew up biking through the Balkan hills of Gabrovo, Bulgaria, and walking the deserts of Libya.

At Yale, she studies Global Affairs with certificates in Data Science and Intensive Human Rights, with plans to go into entertainment law. She's worked closely with migrant and refugee youth through the Migration Alliance (formerly co-president) and will continue to serve as Editor-in-Chief of the Yale Human Rights Journal. She's also part of the Bulgarian Society, MENACC, and the Muslim Students Association.

She's danced for over 14 years—hip-hop, lyrical, salsa, belly dancing, even line dancing—and recently added Bollywood-fusion to the list as the former captain of Rangeela.

Outside her favourite place, the dance studio, she's been a FOOT leader and has gotten to know many first-years through the Jonathan Edwards College Council, so she's excited to finally FroCo.

You might also recognize her as a waitress at NOA, JE's (and maybe Yale's) favorite Thai spot, where she's worked since first year. She's a huge sports fan who watches mostly basketball, volleyball, football, and fútbol. She cycles through favorite teams often, but the Cowboys have her loyalty for better or worse.

In her free time, she's usually at the gym, watching a game, at a concert, cooking, arguing about something random, or finding a sunny spot to enjoy with friends.

Daliya can't wait to meet her Frosh and share playlists—let her know what you're listening to lately.

PEOPLE TO KNOW IN JE

Head Saltzman

Head Saltzman is a Yale professor of Biomedical Engineering, whose research focuses on effective disease prevention. Your Head of College helps to carry out directives from higher admin at Yale, as well as advising the Dean. Head Saltzman is responsible for JE's social, intellectual, creative and cultural life.

Dean Robles

Dean Robles joined JE in 2024 after 9 years of teaching History, Religion, Philosophy, and Social Sciences at Choate Rosemary Hall. Dean Robles is from the Honduras, with research focusing around Latin America. He will be your primary academic advisor and has the authority to postpone assignments/exams in cases of sickness or emergencies.

Jill Haines

Jill is the Assistant to Dean Robles. To schedule a meeting with him, you will primarily be in contact with Jill.

Gygi Jennings

JE's Operations Manager. Gygi manages all the financial and facilities issues, orders necessary equipment for events, as well as numerous student activities.

Nicole Wade

Nicole supports Head Saltzman and teams up with Gygi to manage College Aides, assist with daily operations, work with Fellows, and manage the JE website.

Shannon Terebesi

Shannon supports Head Saltzman as the House Manager, helping to preserve and upkeep the space, as well as hosting College Teas and Study Breaks for students.

Move-In: If you're driving to New Haven, try to get to Yale early to avoid bad traffic!! There will be street parking available, and the Yale Police will watch your stuff as you unload your car. Once you've emptied your vehicle, you will have to move to street parking. Look for students in JE Move-In T-shirts; we will help you carry your stuff to Bingham!

WELCOME HOME!

SAY IT WITH US...

JE SUX!



MADE WITH LOVE BY CLARISSA TAN, JE'26